



# MONTHLY MEMBERSHIP PROGRESS REPORT

Results as of: 4/30/2015

Multiple District 12

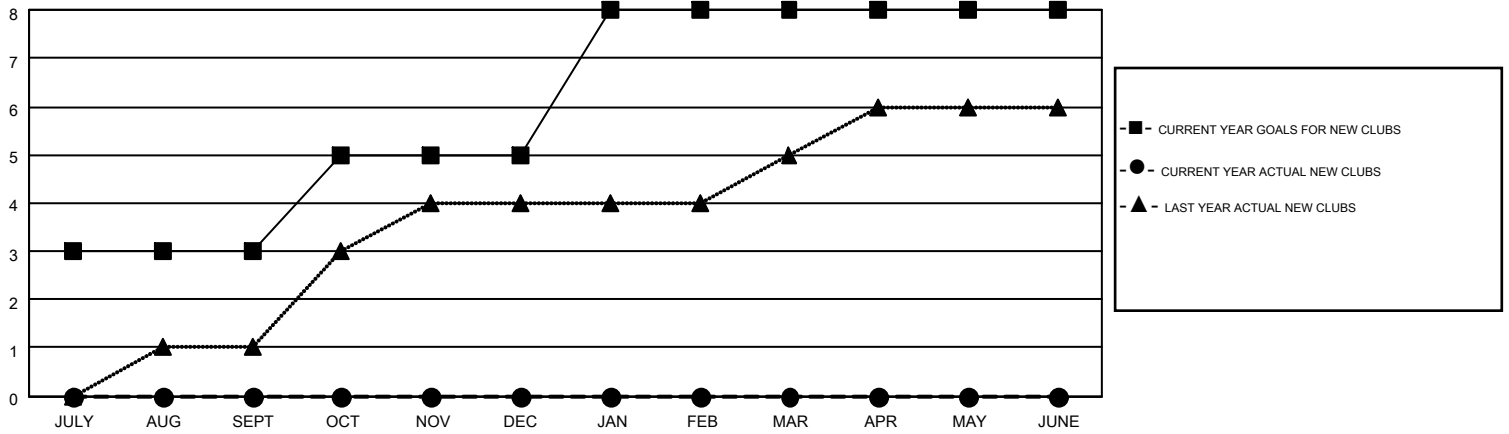
LOCATION: TENNESSEE

GMT: CARL HARRELL

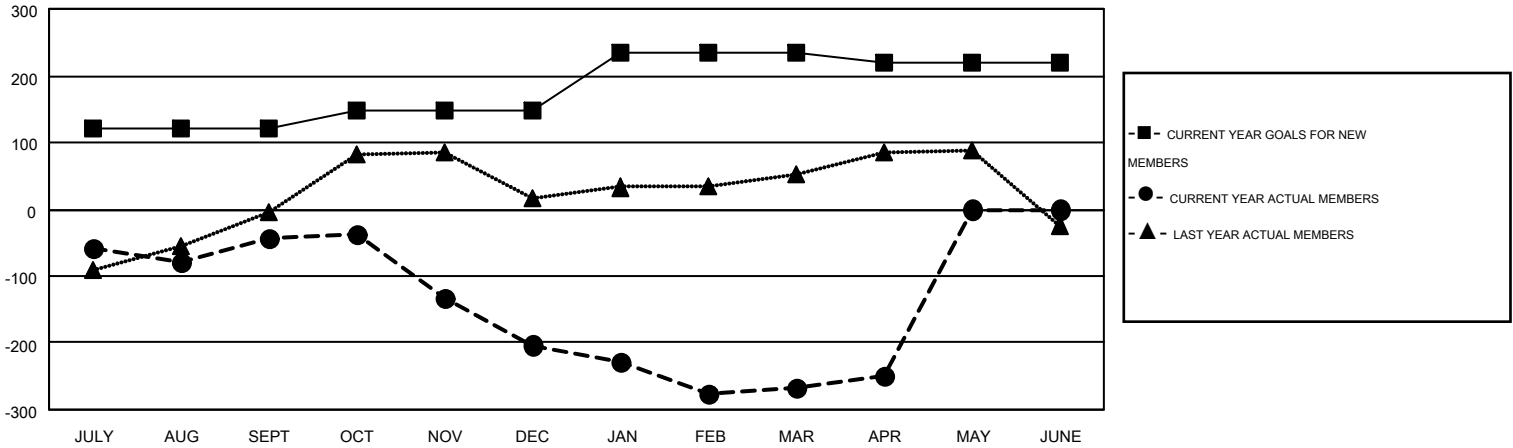
GMT CA 1

Clubs					Members				
RESULTS FOR 2014-2015					RESULTS FOR 2014-2015				
QUARTER	NEW CLUB GOAL	NEW CLUBS	DROPPED CLUBS	NET GAIN/LOSS	QUARTER	NEW MEMBER GOAL	CHARTER AND NEW MEMBERS ADDED	DROPPED MEMBERS	NET GAIN/LOSS
JULY/AUG/SEPT	3	0	0	0	JULY/AUG/SEPT	120	171	213	-42
OCT/NOV/DEC	2	0	1	-1	OCT/NOV/DEC	28	131	292	-161
JAN/FEB/MAR	3	0	2	-2	JAN/FEB/MAR	86	119	183	-64
APR/MAY/JUNE	0	0	0	0	APR/MAY/JUNE	-14	65	48	17

GOALS AND ACTUAL NEW CLUBS CUMULATIVE



GOALS AND ACTUAL MEMBERS CUMULATIVE



DROPPED CLUBS: 3	122 CLUBS OF 216 ADDED 1 OR MORE NEW MEMBERS	<u>GENDER DISTRIBUTION</u>	
		MALE	3,444 (65.48%)
<u>DROPPED MEMBERS</u>		FEMALE	1,816 (34.52%)
DECEASED	76	<a href="#">CLICK HERE FOR HEALTH ASSESSMENT DATA</a>	
CLUB CANCELLED	2		
OTHER	658		
TOTAL	736	FAMILY UNIT MEMBERS	1,086
		HEAD OF HOUSEHOLD	536
		NON-HEAD OF HOUSEHOLD	550